

CREDENTIALING CHATTER

JANUARY/FEBRUARY—2008

IN THIS ISSUE:

- WELCOME
- EVALUATION BLUES

WELCOME!

HAPPY NEW YEAR and welcome to our first issue of Credentialing Chatter! We are excited about our newest endeavor and hope that you will be too.

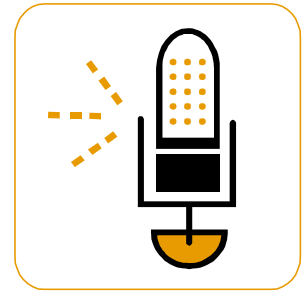
Our vision for Credentialing Chatter is that it be a practical tip sheet addressing everyday issues encountered by Medical Staff/Credentialing professionals.

We realize that regulation and legislation updates are important and many organizations publish documents assisting with interpretation and implementation of those standards. Since these areas are ad-

dressed through these other mechanisms, the focus of Credentialing Chatter is to help you with the everyday issues that plague your office.

This first issue addresses "Evaluation Blues." Every year the Medical Staff/Credentialing Manager must perform this administrative task which is often difficult, time consuming, and stressful. We provide tips to make the process less onerous.

We developed this newsletter with you in mind and would value your input and recommendations. Please send us your questions, ideas for arti-



cles and/or comments. Remember, if you are interested in obtaining additional information about a certain subject, odds are other professionals in our field are too.

Ideas for articles, questions, and feedback can be emailed to credchatter@lsmssc.com. All ideas and questions will be credited to the person providing the information unless you wish to remain anonymous.

We look forward to hearing from you!



EVALUATION BLUES

You're walking in to work on January 2nd and a well-meaning co-worker gives you a big smile and says "Happy New Year!". You, the manager of the Medical Staff/Credentialing Office, grunt back some inaudible reply and trudge off to your office to meet the new task at hand, yearly performance evaluations.

Just the mere thought of this task is enough to turn any good natured, easy going manager into mush! So how do you get through it plus all

the other mounds of work on your desk? Simplicity! None of us are perfect and as a manager it is difficult to call out someone's faults even if they are basic.

To make the task easier, choose the top three areas where each employee excels. Next, select one (or two) areas where you would like each employee to improve. By highlighting a small number of concerns, you and your employee have a much better opportunity to achieve success. If you have an em-

ployee that has many areas to work on, choose two or three major issues for the evaluation and work with your human resources department to manage the rest.

When it's time to present the evaluation, consider giving the document to your employee the day before you meet. This gives the employee time to absorb the contents before the face-to-face.

Now take a deep breath, you'll get through this. You always do!

LS Medical Staff Services
Consulting, LLP

Lynn Deaver, CPCS, CPMSM
Winston, Oregon
lynn@lsmssc.com
(541) 679-1453

Sarah Brown
Loveland, Colorado
sarah@lsmssc.com
(970) 292-8687

Fax (866) 878-6847

www.lsmssc.com

Visit us on the web:

www.lsmssc.com

CHATTER BOX

Future Chatter

- File Review Preparation
- Chatter Blog News
- Employee Recognition



LS Medical Staff Services Consulting, LLP, is dedicated to providing quality and timely credentialing & privileging services to the Medical Staff/Credentialing Office. We have over 25 years of combined experience in the field and have been nationally certified by the National Association Medical Staff Services.

We formed our company with you in mind. Our services are customized to meet the needs of your organization. Medical Staff/Credentialing services is challenging for all health-care organizations, large or small.

Finding experienced personnel can be difficult regardless of your location. Don't settle! Let LSMSSC help you get through the day-to-day work with qualified temporary staffing so you can focus on finding the right employee.

Our mission is to equip your Medical Staff/Credentialing Office with the tools needed to enhance and further promote the success of your organization.

Are you ready for tomorrow? Don't wait; call us today and find out how we can help get you on track!

LS Medical Staff Services Consulting, LLP
3665 Downieville Street
Loveland, CO 80538

